

LYON COLLEGE



Lyon College is the oldest college in Arkansas with its original charter. A private, liberal arts college affiliated with the Presbyterian Church, Lyon offers a challenging curriculum for its students and prepares graduates for life.

Approximately 700 students from over 24 states and 17 countries attend Lyon. They can tailor their education, selecting from 17 majors as well as pre-professional and individualized options. About 54% of students are the first in their family to attend college, and nearly 41% come from low income families. For the fifth year in a row, Lyon graduates have had exceptionally high placement rates (about 98%) in either graduate programs or careers.

Lyon opened its doors in 1872 and continues to expand the opportunities available to its students well into the 21st century.

The new exercise science program, for example, addresses the needs of one of the fastest-growing career fields, offering both a healthcare track and a fitness and wellness track. The college also added an Army Reserve Officer Training Corps (ROTC) program and Military Science and Leadership concentration, giving students access to new scholarships and careers.

In addition, Lyon became the first and only college in Arkansas with a professional esports player coaching its esports program in 2019.

Students can even bring a familiar face to campus because Lyon is the first college in Arkansas to offer pet-



friendly housing. In March 2019, the college hosted the "leash cutting ceremony" for the new Schram Memorial Bark Park, named after the late Emeritus Professor of Biology, Dr. Mark Schram.

With more than 100 faculty and staff and a growing student body, Lyon contributes significantly to the economic health of Batesville and Independence County.



BATESVILLE & INDEPENDENCE COUNTY ECONOMIC REPORT

BATESVILLE & INDEPENDENCE COUNTY



BATESVILLE AREA DRONE PHOTOGRAPHY ON THE COVER & INSIDE COVER BY BRYCE PAXSON



Independence County truly has it all, which makes it the best place to live, work and play. You'll find excellent healthcare facilities, a superb education system, top notch recreational and outdoor activities, great shopping and dining, and a culture rich in southern hospitality.

Our community of nearly 38,000 is located in the scenic mountains of the Ozark Gateway with a landscape that offers no shortage of natural beauty.

Downtown Batesville, adorned with beautiful historic buildings and homes, creates an ambience of grace and grandeur.

We have a well-qualified workforce that is fed by excellent public school systems that continue to set standards of excellence. Batesville and Independence County are positioned with an infrastructure that is well suited for continued growth.

If you haven't experienced Batesville and Independence County, we invite you to do so, because we think you will agree that it is one of the best places to call home.

Dale Cole
Chairman, President & CEO
First Community Bancshares, Inc.
Chairman & CEO
First Community Bank

Boris Dover
Executive Vice President
First Community Bancshares, Inc.
President & COO
First Community Bank

BATESVILLE & INDEPENDENCE COUNTY

As a community-focused partner, First Community Bank, a locally owned and operated community bank, provides this 2020 economic report as valuable insight into the strong economic climate of Batesville and Independence County.

Nestled in the foothills of the Ozarks, Batesville was founded in 1812 and is the oldest existing city in Arkansas. Batesville maintains one of the most thriving municipalities in the state and has earned recognition of "Best City to Live in Arkansas" by *USA Today*. The city is positioned just 94 miles north of Little Rock and 121 miles west of Memphis, making it a regional manufacturing and distribution hub.

A thriving business environment, a viable workforce, and a highly accredited education system have all fueled Batesville's economy and growth over the years. The city's economy is well diversified among industry, agriculture and tourism.

Since 1947 LaCroix Precision Optics has positioned itself as a premier domestic volume and prototype manufacturer of custom precision optics for the medical, scientific, military, and industrial equipment industries. At their facility in Batesville, Arkansas, they use both traditional methods and advanced CNC processing to achieve the highest level of precision and quality demanded by their customers while producing over 1 million optics per year.

Intimidator, Inc. is home to globally recognized products such as Spartan Mowers, Intimidator UTVs, Bad Dawg Accessories (after-market accessories for ATVs/UTVs), Ground Hog Max Disc Plow, Gourmet Guru Grills, and the new eNVy - Neighborhood Vehicle. Having nearly doubled its employee count over the past year, they are one of the largest employers in town and were honored as the "Best Industry" of Independence County in 2020, the Official Community's Choice Award, by the Batesville Daily Guard.

INTIMIDATOR, INC. HEADQUARTERS



SPARTAN MOWER

FutureFuel Chemical Company specializes in custom chemical and biodiesel manufacturing. The company is a leading producer of high-quality biodiesel and manufactures products for the painting, carpet, agricultural, laundry and pipeline industries, as well as other custom specialty chemical applications.

Lifeplus, a manufacturer and worldwide distributor of high-quality nutritional supplements, is also headquartered in Batesville. The majority of the organization's products are manufactured locally. In addition to a domestic market, supplements are shipped for distribution in Europe and Asia.

Bad Boy Mowers, Inc., a nationally-recognized, leading manufacturer of zero-turn mowers, drives innovation in their production facilities in Batesville. Installing and utilizing the latest manufacturing technology, from robots to in-house, proprietary manufacturing and shipping software, Bad Boy continually makes advances to keep up with growing demand. Bay Boy not only manufactures zero-turn mowers, but has also developed product lines for rotary cutters, push mowers and more.

Flowers Baking Co. of Batesville, LLC is a major employer that provides quality baked goods to a five-state region and is the largest

BAD BOY MOWERS



BATESVILLE IS LOCATED IN INDEPENDENCE COUNTY, AR, ONLY 94 MILES NORTH OF LITTLE ROCK & 121 MILES WEST OF MEMPHIS

commercial bakery in Arkansas. Its territory reaches more than 175 sales routes supplying a range of fresh baked goods to retail and foodservice customers including Walmart, Kroger, Burger King, and Chick-fil-A. Flowers Baking Co. has been listed by the EPA and awarded the ENERGY STAR certification in 2020 for being among the 95 most energy-efficient plants in the U.S. and Arkansas.

Driven by continued and steady growth, the commercial district along the 167 corridor just south of the White River is the rapidly expanding home to a plethora of area businesses including Mark Martin Automotive, Mark Martin Powersports, The Scott and Stanley Wood family of automotive dealerships, Independence County Off Road and the local airport.

The Batesville Regional Airport (BVX) is a city owned, public-use general aviation airport located 3 miles south of the central business district of Batesville, in Independence County. The airport occupies a total of 375 acres providing two runways, one of which is supported by multiple day and night instrument approaches and another that is non-lighted.

First Community Bank broke ground on a new operations center at 1401 Harrison Street. The three-story operations center will be approximately 28,809 sq. ft. and will be connected to the bank's

BATESVILLE REGIONAL AIRPORT



FUTUREFUEL CHEMICAL COMPANY



LACROIX PRECISION OPTICS





WHITE RIVER HEALTH SYSTEM

As a leading healthcare provider, leading employer in the region, and community advocate, White River Health System (WRHS) is a well-rounded community partner.

Because health is at the heart of WRHS, providing access to needed healthcare services is essential. WRHS's healthcare footprint includes facilities in 13 rural communities across north central Arkansas. Beyond any boundaries or county lines, WRHS embraces an innovative approach to the delivery of healthcare by providing access to healthcare regardless of location through WaveLink. WaveLink is a telemedicine feature that allows patients to talk to a provider about a health issue anytime or anywhere using a computer, smartphone or tablet. WaveLink providers evaluate patients for a number of non-emergent conditions.

Access to innovative medical technology provides patients with an efficiently managed, quality medical care experience. WRHS recently installed two 3D Mammography machines. This advanced screening technology has been clinically proven to detect more invasive cancers and reduce the overall number of callbacks for further diagnostic testing compared to 2D mammography. Funding for these machines was provided by generous and supportive individuals and businesses through a fundraising campaign of the WRHS Foundation.

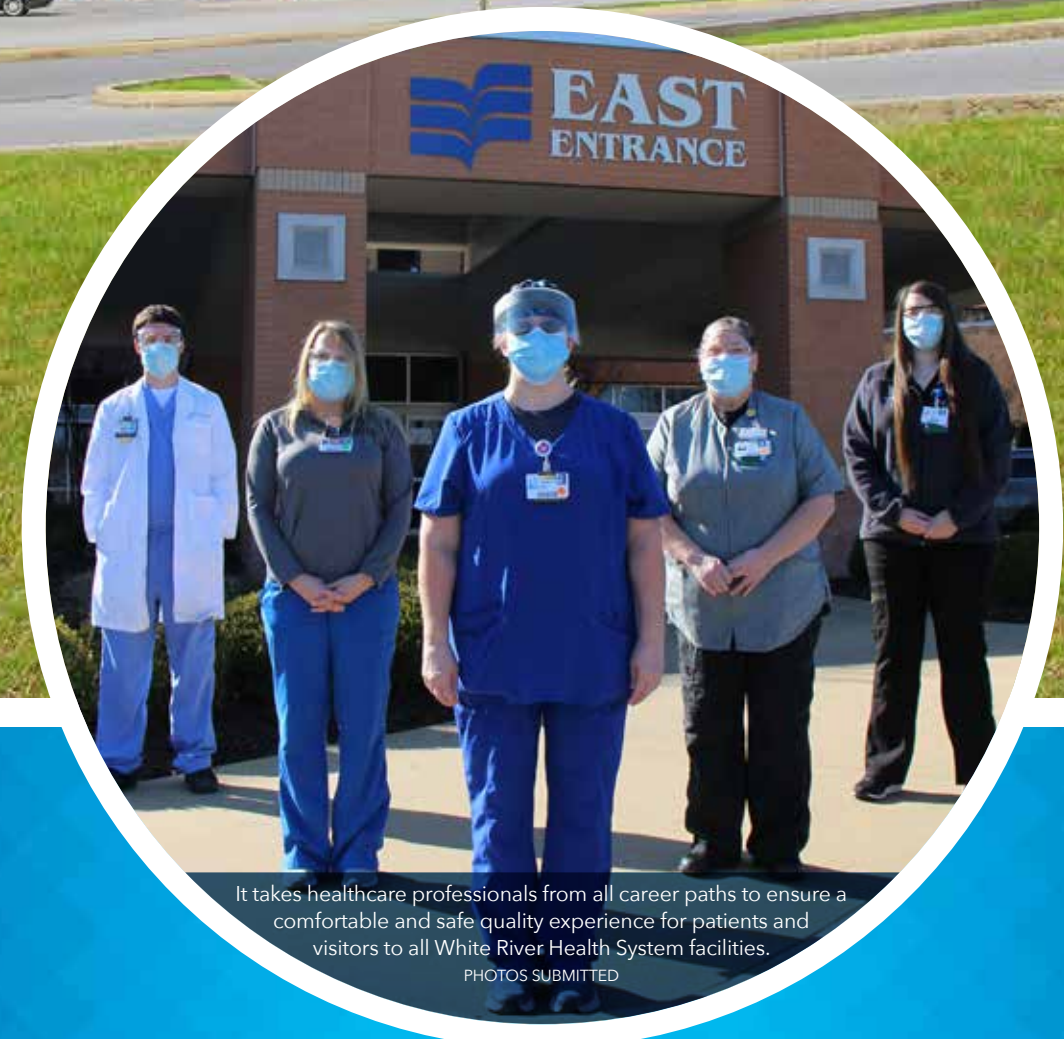
As an employer, WRHS offers a variety of career opportunities from entry level to administrative. With more than 1,600 employees throughout the WRHS organization, it does not go unnoticed that those providing care could be a familiar face to a patient, adding a level of comfortable, home-like, quality

care that may be difficult to find in larger regions. Additionally, WRHS also welcomes providers and their families to the community who choose to make Independence County or surrounding areas their home.

WRHS was recognized by the Batesville Chamber of Commerce with the Community Collaboration Award at the 2020 Annual Meeting and Gala. White

River Medical Center, the flagship facility for WRHS, was, once again, recognized as a Top 100 rural and community hospital by the Chartis Center for Rural Health and was the only hospital in Arkansas to receive this recognition in 2020.

WRHS is proud to provide opportunities in a variety of ways to those living in our region.





THIS 2020 COMPREHENSIVE ECONOMIC REPORT DEMONSTRATES THE FISCAL STRENGTH OF BATESVILLE & INDEPENDENCE COUNTY AS IT REFLECTS OUR PROGRESS, ACHIEVEMENTS & PLANS FOR THE FUTURE.

From the picturesque Ozark Mountains to the banks of the gallant White River, natural wonders abound in Independence County. With miles of rivers and streams that are perfect for floating trips and paddling adventures, the White River welcomes many visitors who come in attempt to catch the fish of a lifetime. The county’s beautiful landscapes and navigable waters are home to a variety of interests including hiking, canoeing, kayaking, fishing, climbing, camping, boating and skiing for outdoor adventures you won’t forget!

Nature enthusiasts often frequent the popular Poke Bayou that winds along the northern and western boundaries of Batesville and spills into the White River. Another trending outdoor destination is the privately owned Jamestown Crag, just south of Batesville, which offers stunning views, as well as some of the best sport climbing in the state.

In addition to our many outdoor wonders, Independence County is home to the Batesville Community Center and Aquatics Park, a 100,000 square foot facility that includes a gymnasium, walking/running track, fitness room, meeting rooms and indoor swimming pools.

Batesville is home to several top-notch recreational parks, walking trails and bike trails, as well as a 9-hole municipal golf course. The newest addition to the parks and recreation facilities is the Sara Low Memorial Dog Park. The new park is a 30,000 sq. ft. fenced area for your K9 friends to play, get some exercise and socialize with other dogs.

Batesville’s White River Wonderland, a free annual Christmas lights drive-through display at Riverside Park, is a must see event that draws locals and many visitors from states away to visit the “Christmas Capitol of Arkansas.” Set to holiday tunes courtesy of a local station, the display features more than 2 million lights with many animated scenes and displays. Last holiday season Riverside Park hosted an estimated 200,000 people, and nearly 63,500 cars toured the display. To the delight of the visitors, a Ferris wheel, wintry concessions, carriage rides, train rides and ice skating are all available for a nominal fee.

Historic downtown is the heart of Batesville! It’s lively and thriving with retail that includes unique shops, fine and casual dining, bookstores, antique shops, parks, the county library and many other eclectic small businesses. Main Street Batesville was recently recognized with numerous awards at the Main Street Arkansas Awards ceremony during the Municipal League.

The historic Melba Theater was awarded a grant through the HartBeat program, the only grant of its type awarded in Arkansas. This grant was sponsored by The Hartford and Main Street America. The Melba Theater was originally built as a mercantile store and was remodeled in the 1940s in the art deco style. The Melba was one of Arkansas’s first cinemascope theaters.

Main Street Batesville was also awarded a public art grant from the Department of Arkansas Heritage. It provided funding for the installation of the “Blossoming Main Street” mural featured prominently downtown. The mural was a partnership between Main Street Batesville, Lyon College art department, and the Batesville Area Arts Council. Local artist, Dustyn Bork, crowdfunded and painted the “Unity” mural on the library. Numerous artistic murals add to the ambience of the downtown area.

Nestled along the White River bend is the Course at Eagle Mountain, a premier 18-hole championship golf course. Visitors enjoy gently rolling hills and scenic landscapes as players of all skill levels make their way across the empire zoysia fairways and championship bermudagrass greens. The semi-private facility offers a clubhouse, full-service restaurant, fully-stocked golf shop and bar.

The Batesville Motor Speedway is a 3/8-mile oval dirt track that is located at Locust Grove, Arkansas, just a few miles west of Batesville. This famed track is where NASCAR driver Mark Martin’s racing career began in 1974. Racing begins in March and runs through September on Friday nights and consists of IMCA modifieds, street stock, hobby stock, factory stock and mini stock.

A community’s success is built upon the cornerstone of quality education for its youth. Independence County offers four exceptional school districts: Batesville with 3,400 students, Southside with 2,300 students, Cedar Ridge with 674 students and Midland with 440 students.

The Batesville School District’s preschool program was named 2020 Best of Independence County, the Official Community’s Choice Award, by the Batesville Daily Guard. Their “Parents as Teachers” program is a Blue Ribbon Award recipient for providing superior services to the children and families they support. The district is a “Save the Children” school, making them eligible for in-kind donations allowing them to give back to their families and community.

The Southside School District is an innovative leader of education in our area and across the state. The district serves approximately 2,300 students from preschool through the 12th grade and employs approximately 260 employees. It was recently recognized as the #1 School District in the state for student enrollment increases for schools with 500 students or more by the Arkansas Division of Public-School Academic Facilities and Transportation.

In addition to the Batesville and Southside School Districts, Batesville is also home to three private schools - Montessori Christian Academy, Presbyterian Day School and Batesville Montessori School.

MANUFACTURING COMPANIES *in Independence County*

COMPANY	NUMBER OF EMPLOYEES	BUSINESS TYPE
Peco Foods Inc.	1,211	Poultry Processing
Ozark Mountain Poultry	1,000	Poultry Processing
Bad Boy	840	Lawn Mowers/Rotary Cutters/Vehicle Accessories
FutureFuel Chemical Co.	465	Chemicals/Alternative Fuels
Intimidator Inc.	431	MTVs/Fireworks/Lawn Mowers
Custom Craft Poultry	210	Poultry Processing
Flowers Baking Co. of Batesville	205	Bread
Atlas Asphalt/White River Materials	200	Asphalt/Highway Construction
Lifepius International	125	Nutritional Products
LaCroix Precision Optics	105	Precision Optical Lenses
Arkansas Lime Co.	83	Lime & Limestone
TWH Enterprises LLC	33	Manufacturing & Fabricating
Batesville Cold Storage	26	Poultry Processing & Storage
Midwest Lime Co.	25	Limestone

NON-MANUFACTURING COMPANIES *in Independence County*

COMPANY	NUMBER OF EMPLOYEES	BUSINESS TYPE
White River Health System	1,686	Health Care
White River Area Agency on Aging	641	Human Services
Batesville Public Schools	511	Education
First Community Bank	461	Financial Institution
Network of Community Options	379	Human Services
Walmart Supercenter	362	Retail
Arkansas State Highway Department	275	Road/Transportation
UACCB	265	Education
Southside Public Schools	260	Education
Citizens Bank	218	Financial Institution
City of Batesville	206	City Services
Wood-Lawn Nursing Home	205	Health Care
Independence County	200	County Services
Bill Davis Trucking/Chimney Rock Cattle	151	Transportation/Cattle
Colton's Steak House & Grill/Freddy's Frozen Custard & Steakburgers/Popeyes	150	Restaurant
Sonic Drive-In	135	Restaurant
Northcentral Arkansas Development Council	105	Development Services
The Home Depot	100	Building Supplies
Lyon College	100	Education
McDonald's	100	Restaurant
Mountain Meadows Health & Rehab Center	95	Health Care
Vital Link	93	Health Care
Access Arkansas Processing Center	83	Human Services
Approve Home Medical/Caring Hands Hospice	55	Home Health Care
Wood Family Dealerships	53	New & Used Car Dealer
The River Waterfront Steak & Grill	50	Restaurant
Mark Martin Ford/Kia	45	New & Used Car Dealer
Wade's Heating Air Conditioning & Electric	44	Refrigeration Service & Repair
Pepsi Beverages Co.	40	Beverage
White River Planning and Development District	27	Development Services
Econo-Mart Pharmacy	25	Pharmacy
Kallsnick Inc.	23	Food Wholesaler
Shawn Smith Plumbing	23	Business & Residential Plumbing Services
M&A Jones Construction	18	General Contractor
Bryant's Pharmacy and Health Care Center	17	Pharmacy/Home Health Care
Arkansas Sheriffs' Youth Ranches	16	Nonprofit
Wilson Wil-Sav Pharmacy	11	Pharmacy
Sav-On Pharmacy	9	Pharmacy

CROPS, CATTLE & POULTRY

YEAR	ALL CROPS	ALL LIVESTOCK	OTHER FARM INCOME	TOTAL
2017	\$23,602,501	\$82,281,600	\$9,788,000	\$115,672,101
2018	\$20,742,961	\$75,141,600	\$9,788,000	\$105,672,561
2019	\$20,083,448	\$58,396,600	\$9,788,000	\$88,268,048
2020	\$27,245,551	\$58,879,100	\$9,810,000	\$95,934,651

Sources: Arkansas Farm Bureau Federation and U.S. Department of Agriculture

POPULATION

	1980	1990	2000	2010	2020
BATESVILLE	8,263	9,187	9,445	10,248	10,706
INDEPENDENCE COUNTY	30,147	31,192	34,233	36,647	37,825

Source: Arkansas Department of Economic Development

TIMBER REMOVAL BY TONS

2020	PINE	HARDWOOD
INDEPENDENCE COUNTY	16,514	21,750
ARKANSAS	18,277,391	2,298,337

Source: Arkansas Forestry Commission

UNEMPLOYMENT RATES

	2016	2017	2018	2019	2020
ARKANSAS	4.0%	3.6%	3.7%	3.5%	4.9%
INDEPENDENCE COUNTY	6.7%	4.1%	4.1%	4.0%	3.6%

Source: Bureau of Labor Statistics

VEHICLES REGISTERED *in Independence County*

TYPE OF VEHICLE	2016	2017	2018	2019	2020
PERSONAL VEHICLES	36,078	36,630	43,521	43,872	44,352

Source: Department of Finance and Administration

PER CAPITA INCOME *in Arkansas*

COUNTY	2016	2017	2018	2019
INDEPENDENCE	\$33,964	\$33,558	\$35,086	\$36,476
SHARP	\$31,357	\$31,610	\$32,012	\$34,403
CLEBURNE	\$34,327	\$36,358	\$38,307	\$38,942
WHITE	\$32,966	\$33,881	\$35,445	\$37,082
LONOKE	\$36,742	\$37,686	\$38,764	\$40,749
IZARD	\$29,557	\$28,838	\$30,608	\$30,923
CRITTENDEN	\$34,830	\$36,589	\$36,978	\$39,041
PULASKI	\$47,834	\$48,838	\$51,185	\$51,927
CRAIGHEAD	\$35,378	\$35,963	\$37,531	\$38,669
WASHINGTON	\$36,776	\$38,883	\$40,247	\$33,386
JEFFERSON	\$33,224	\$33,796	\$35,356	\$36,586
POINSETT	\$30,326	\$30,758	\$32,315	\$35,558

Source: Bureau of Economic Analysis

THE PRIMARY CROPS GROWN IN INDEPENDENCE COUNTY ARE CORN, RICE, MILO, SOYBEANS AND WHEAT. CATTLE & POULTRY ARE THE MAIN LIVESTOCK RAISED IN THE AREA.

Sources: Arkansas Farm Bureau Federation and U.S. Department of Agriculture

The poultry industry is a dynamic and integral part of the local economy. Poultry is the leading agricultural industry in Independence County and the state of Arkansas.

Ozark Mountain Poultry, a subsidiary of Georges Inc. of Springdale, Arkansas, employs approximately 1,000 Batesville-area employees. The Batesville complex proudly produces over 5 million pounds of both non-GMO and antibiotic-free chicken products annually. Their flagship brand, Georges Farmers Market, is distributed nationwide at Walmart, Sam’s Club and many other fine grocers.

Peco Foods is the eighth largest poultry producer in the United States. The company produces approximately 36.5 million ready-to-cook pounds of chicken per week. Peco employs 1,211 employees at the Batesville and Newark facilities in Independence County.

Batesville Cold Storage, a refrigerated warehouse and cold storage facility, continues to provide service to local companies as well as multinational conglomerates.



RETAIL SALES *for Independence County*

	2016	2017	2018	2019	2020
TOTAL RETAIL SALES	\$552	\$565	\$591	\$611	\$667

(IN MILLIONS)

Source: Independence County Treasurer’s Office



WHITE RIVER WONDERLAND - PHOTO BY KRIS CARAWAY



FIRST COMMUNITY BANK'S NEW OPERATIONS CENTER

BUILDING PERMITS

IN BATESVILLE	
TYPE OF PERMIT	2020
SINGLE-FAMILY RESIDENTIAL	5
RESIDENTIAL REMODEL/ADDITION	42
MULTI-FAMILY RESIDENTIAL	36
NON-RESIDENTIAL	10
SIGN PERMITS	7
DEMOLITION	1
OTHER PERMITS	215
VALUE OF ALL PERMITS	\$10,772,827.63

Source: Batesville Code Enforcement Officer

BANKING DEPOSITS

IN INDEPENDENCE COUNTY	
YEAR	DEPOSITS
2016	\$834,260,000
2017	\$877,464,000
2018	\$919,496,000
2019	\$987,741,000
2020	\$1,141,767,000

Source: FDIC as of June 30 of each year



SPRING MILL PHOTO BY JULIE GRAVES

SPRING MILL

Located five miles north of Batesville on Arkansas Highway 69, Spring Mill is the oldest water-powered gristmill in Arkansas. The mill was constructed in 1867 and remained in operation until the 1960s. It was listed in the National Register of Historic Places in 1974. The restoration project earned the mill's owner, Michael Gillihan, an award of excellence from Preserve Arkansas for his efforts in bringing the historical landmark back to life.

INFLATION

YEAR	INFLATION
2016	1.30%
2017	2.13%
2018	2.44%
2019	1.76%
2020	1.40%

Source: First Community Financial Services Inc.

NATIONAL UNEMPLOYMENT

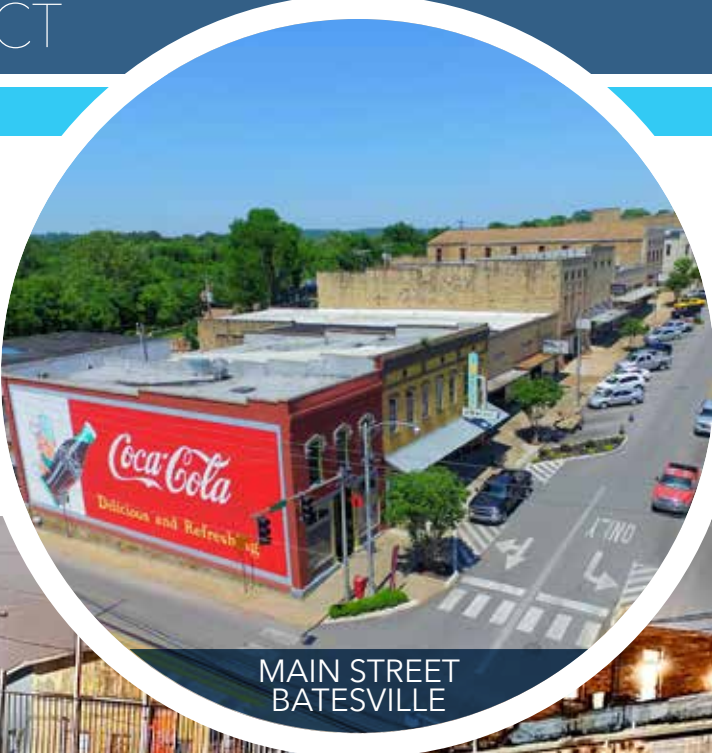
YEAR	UNEMPLOYMENT
2016	4.70%
2017	4.40%
2018	3.90%
2019	3.70%
2020	6.70%

Source: Bureau of Labor Statistics. Local Area Unemployment Statistics (LAUS), Bureau of the Census, 2010 Census of Population

GROSS DOMESTIC PRODUCT

YEAR	NATIONAL GDP (IN BILLIONS)
2016	\$18,707
2017	\$19,485
2018	\$20,500
2019	\$21,429
2020	\$20,934

Source: National Income and Product Account Table, Bureau of Economic Analysis (www.bea.gov)



TOTAL TRAVEL EXPENDITURES

	2015	2016	2017	2018	2019
INDEPENDENCE COUNTY	\$44,659,293	\$45,495,774	\$50,611,434	\$44,330,000	\$45,410,000

VISITORS TO INDEPENDENCE COUNTY

	2014	2015	2016	2017	2018
NUMBER OF VISITORS	157,911	186,642	187,833	204,852	184,708

TRAVEL-GENERATED JOBS

INDEPENDENCE COUNTY

2014	450
2015	503
2016	504
2017	527
2018	500

TRAVEL-GENERATED PAYROLL

INDEPENDENCE COUNTY

2015	\$8,780
2016	\$8,932
2017	\$9,941
2018	\$8,700
2019	\$8,890

IN THOUSANDS

COUNTY TAX RECEIPTS

FOR TOURISM IN INDEPENDENCE COUNTY

2015	\$871
2016	\$887
2017	\$986
2018	\$990
2019	\$1,020

IN THOUSANDS

Source: Arkansas Department of Parks and Tourism

STATE TAX RECEIPTS

FOR TOURISM IN INDEPENDENCE COUNTY

2015	\$2,660
2016	\$2,708
2017	\$3,010
2018	\$2,780
2019	\$2,880

IN THOUSANDS

BATESVILLE COMMUNITY CENTER & AQUATICS PARK

PHOTO BY DR. JOHN HARRIS



INDEPENDENCE COUNTY LIBRARY



UNIVERSITY OF ARKANSAS COMMUNITY COLLEGE AT BATESVILLE



NURSING & ALLIED HEALTH BUILDING

The University of Arkansas Community College at Batesville (UACCB) embraces a practical approach to education, providing students with diverse educational opportunities and job enhancement programs. For more than 20 years, UACCB has crafted a unique blend of associate and transfer degrees and technical certifications by focusing on the needs and demands of industry leaders and residents in the community. The college has continued to expand its program offerings with the addition of certifications in carpentry, masonry, and drywall installation and finishing. UACCB's spring 2020 semester enrollment was the highest spring enrollment the college has seen in almost 10 years. The institution is a major area employer with approximately 265 employees, which includes full-time and part-time, as well as work-study students. The college has an annual payroll of approximately \$5.8 million. The campus is actively involved in providing training opportunities for the community's workforce, logging 14,062 workforce education contact hours in 2020.

UACCB has been recognized as a leader in education, both locally and nationally. The college has been recognized twice by the Aspen Institute College Excellence Program as one of the nation's top 150 community colleges. UACCB maintains partnerships within the community and across the state. The college readily partnered with the Batesville Area Chamber of Commerce and Lyon College in IMPACT Independence County, a strategic plan to improve education and promote economic growth in Independence County,



and hosted the initial IMPACT committee meetings. UACCB also has partnerships with all major four-year institutions in the state, providing seamless paths to four-year degrees for students. The college completed construction on a state-of-the-art workforce training center in 2020 that includes areas for career and technical education, a makerspace and a business and industry meeting room.